





Between Horseshoe Bay and Squamish, just off the Sea to Sky Highway, a Shou Sugi Ban cottage surrounded by lush gardens appears as you wind up the mountain.

A foot bridge leads into a home you will never forget.

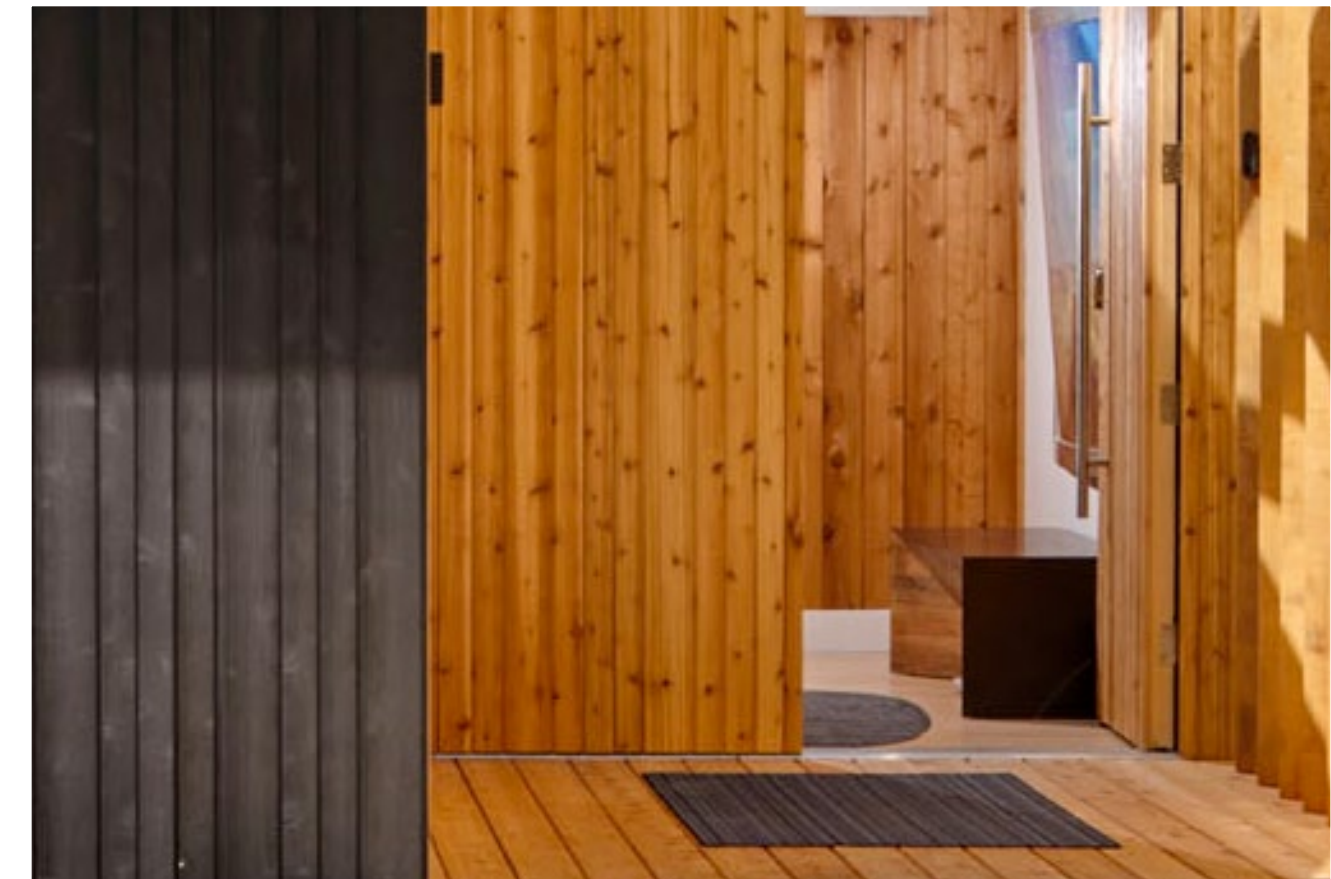
Upon entering, suddenly the ceiling soars and the light pours into an unexpected space. Levels begin to reveal themselves with open stairs going up and down. Each room surprising and delightful. One with skylights to view the stars, one with a patio for a private moment, a kids nest like an indoor tree house filled with games and toys, an outdoor cedar hot-tub to soak away hiking and skiing aches and pains, a small gym to work out in, a library to binge a book, a bar to hang out at, a cozy gas fireplace to snuggle around and a big kitchen that invites chefs and sous chefs. The master bedroom and bathroom spa, however, is the room with a view that sets an unbeatable benchmark of luxury.

The owner's art collection from all over the world adds the feel of a gallery.

On all levels of the home, the view of Howe Sound is so impressive it is as if the house itself created a perfect picture strictly for your enjoyment. Ferry boats and sail boats keep eyes glued to the constantly changing waters as the Squamish River meets the Pacific Ocean. The outdoor deck with a BBQ and a firepit draws you out to watch the hummingbirds hover and breathe in the scent of the towering Cedars and Douglas firs below you. A spell of wonder overcomes your senses at the vista before you.

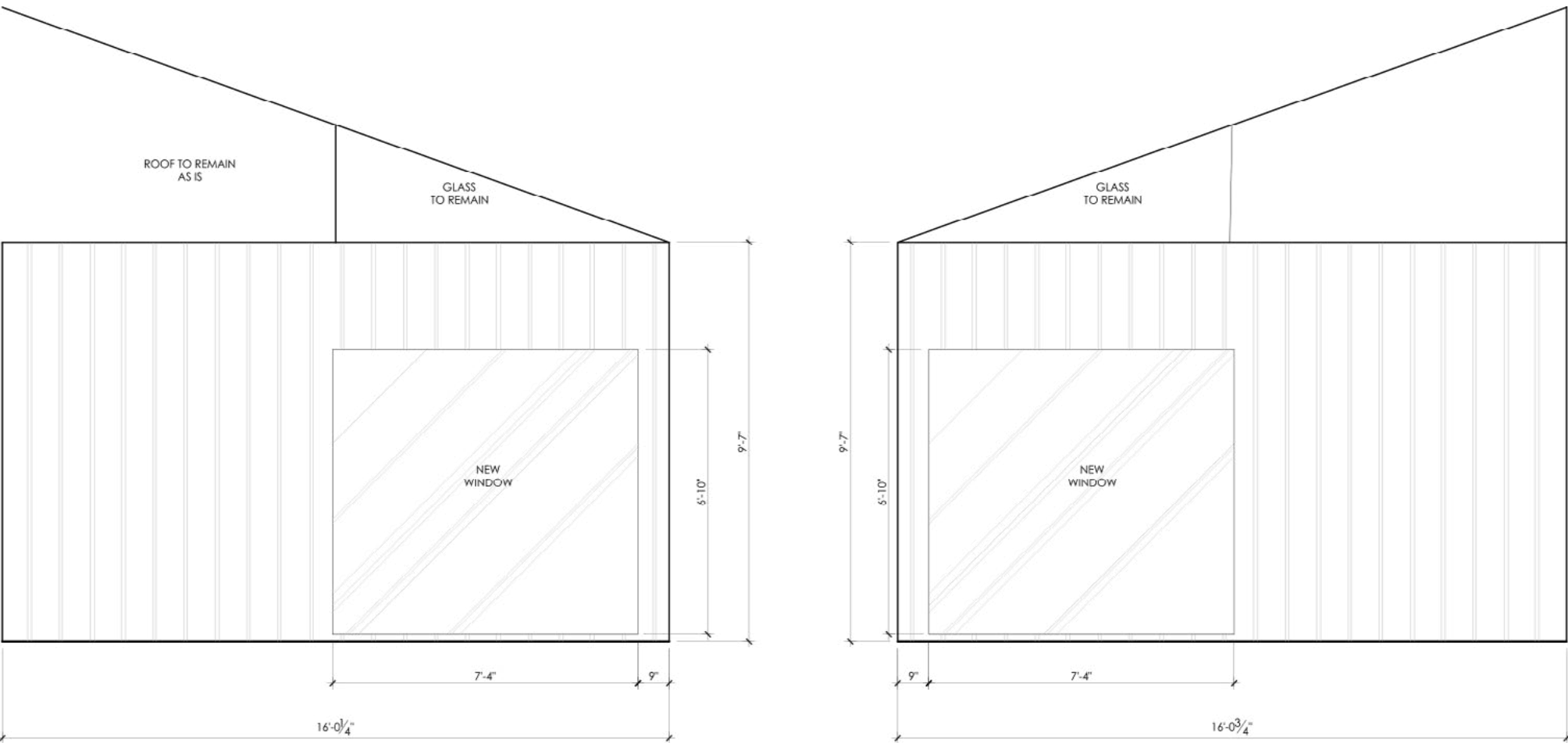
Hiking trails to the Lions Peaks are just outside the front door. Turn left to Cypress Ski resort and right to the world-famous Whistler. Easy access to the airport and Vancouver, Lions Bay is a friendly and safe neighborhood and this home is a hidden gem.





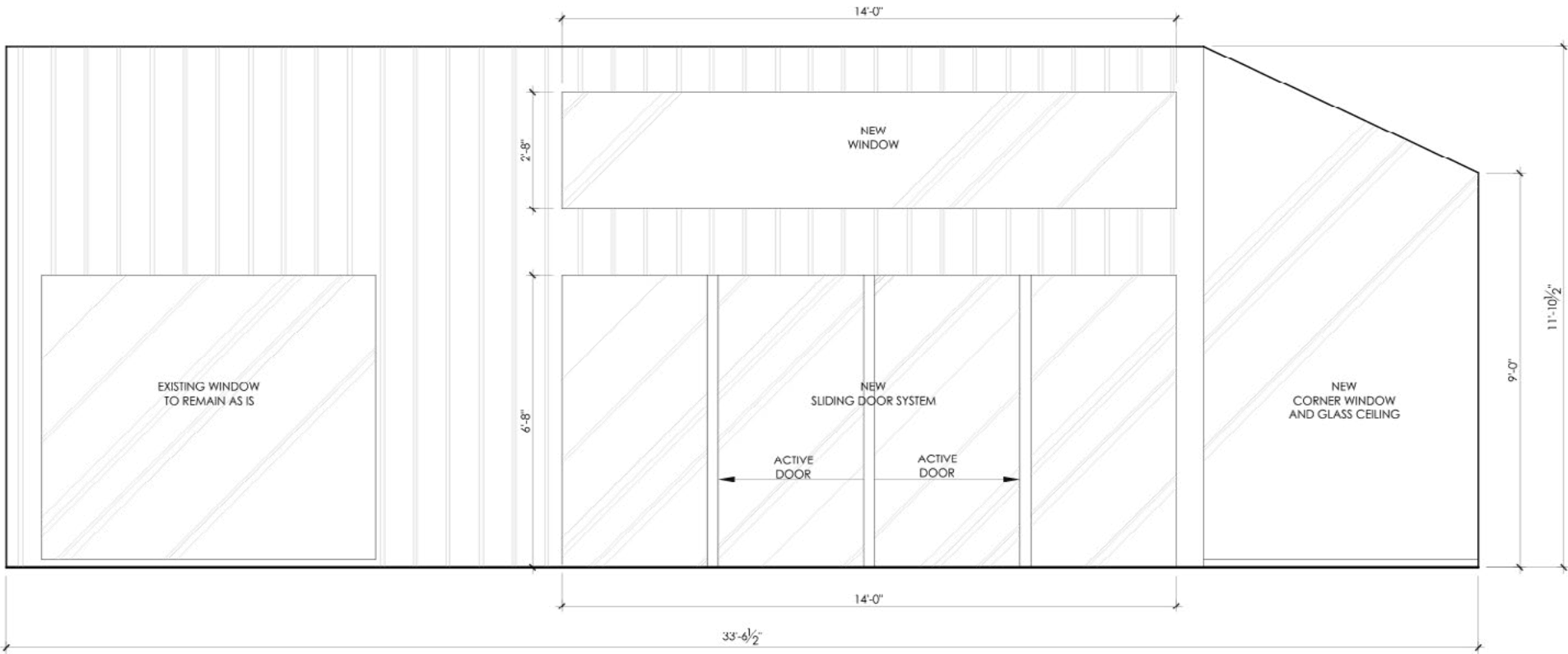




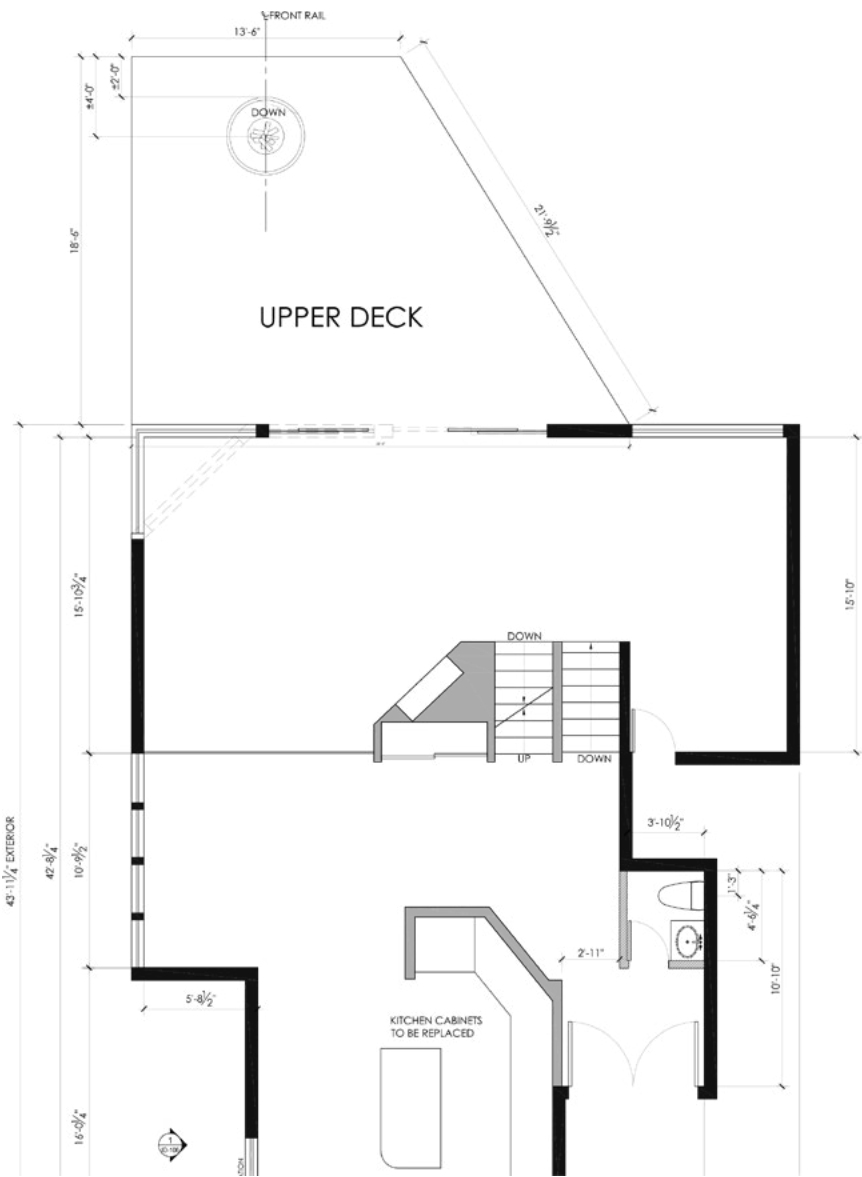
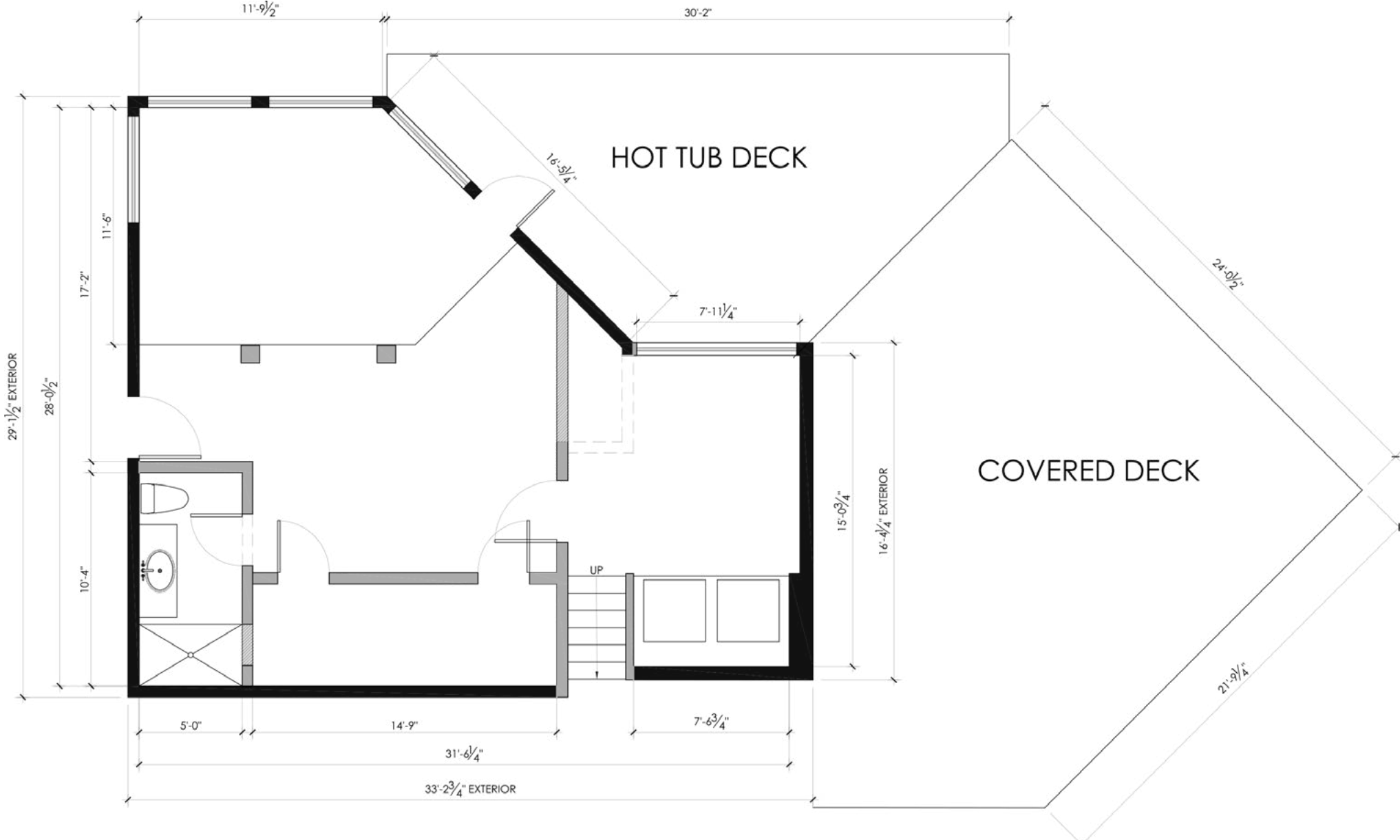


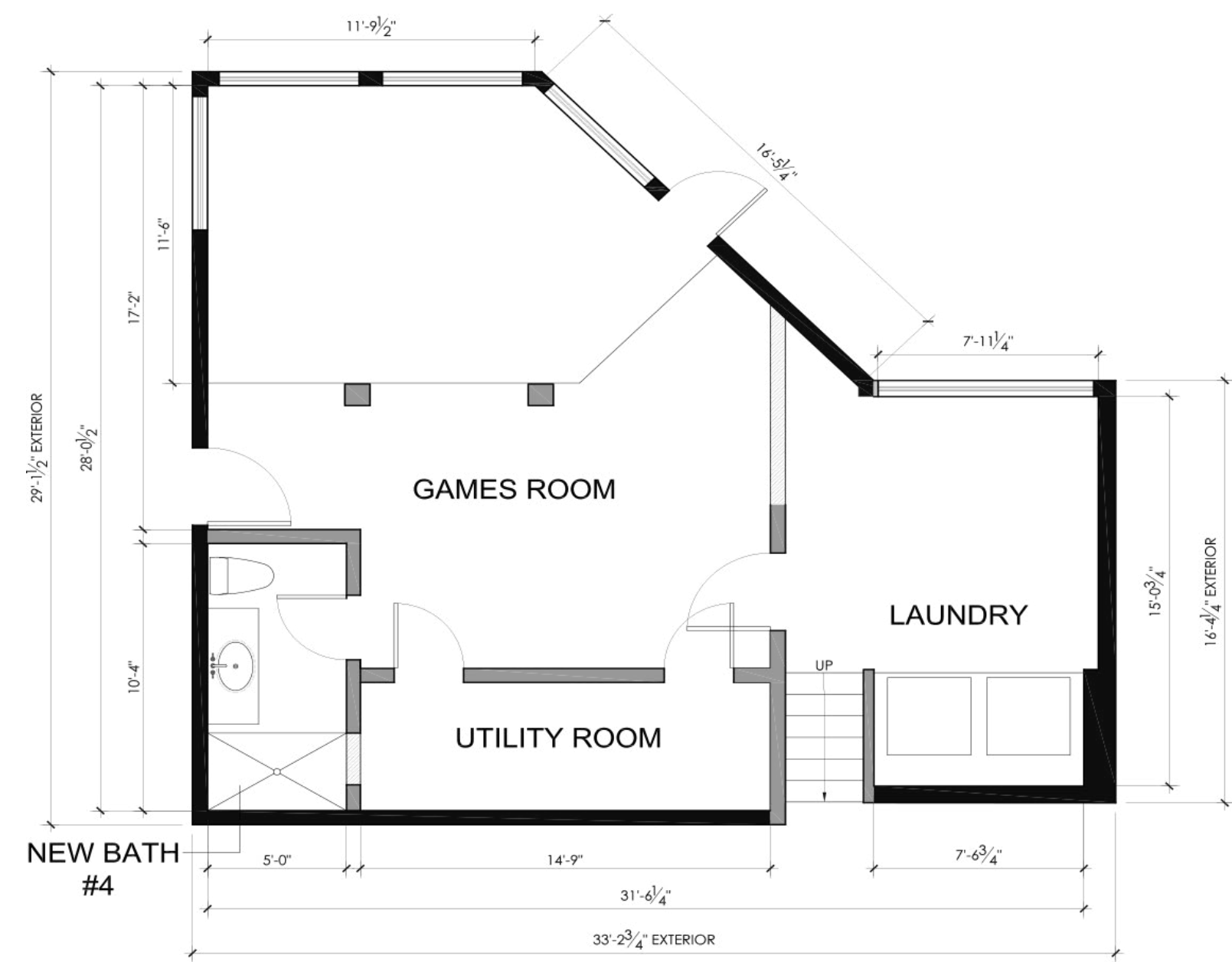
1 FRONT EXTERIOR ELEVATION
SCALE: 1/2" = 1'-0"

2 FRONT EXTERIOR ELEVATION
SCALE: 1/2" = 1'-0"

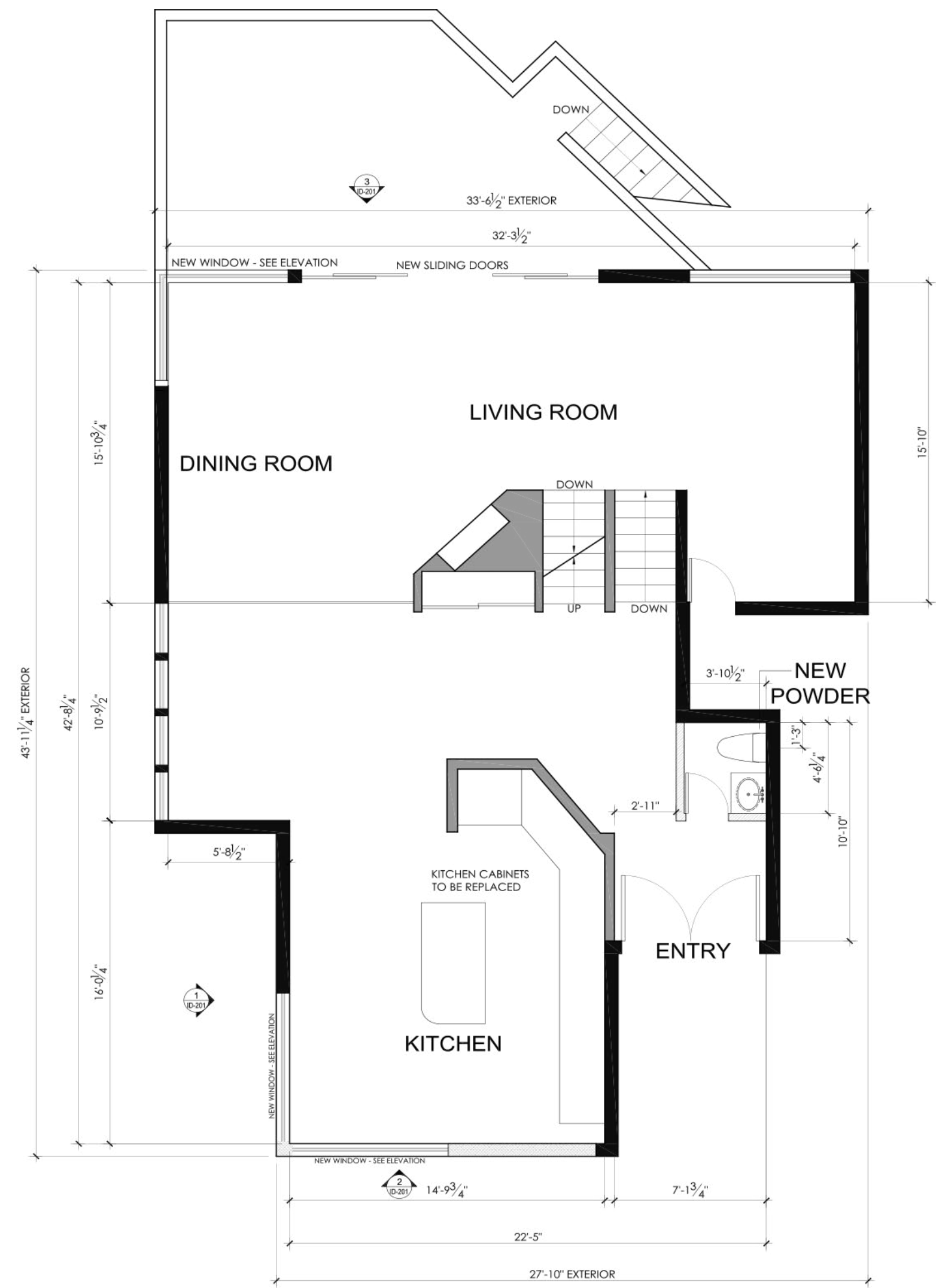


3 BACK EXTERIOR ELEVATION
SCALE: 1/2" = 1'-0"

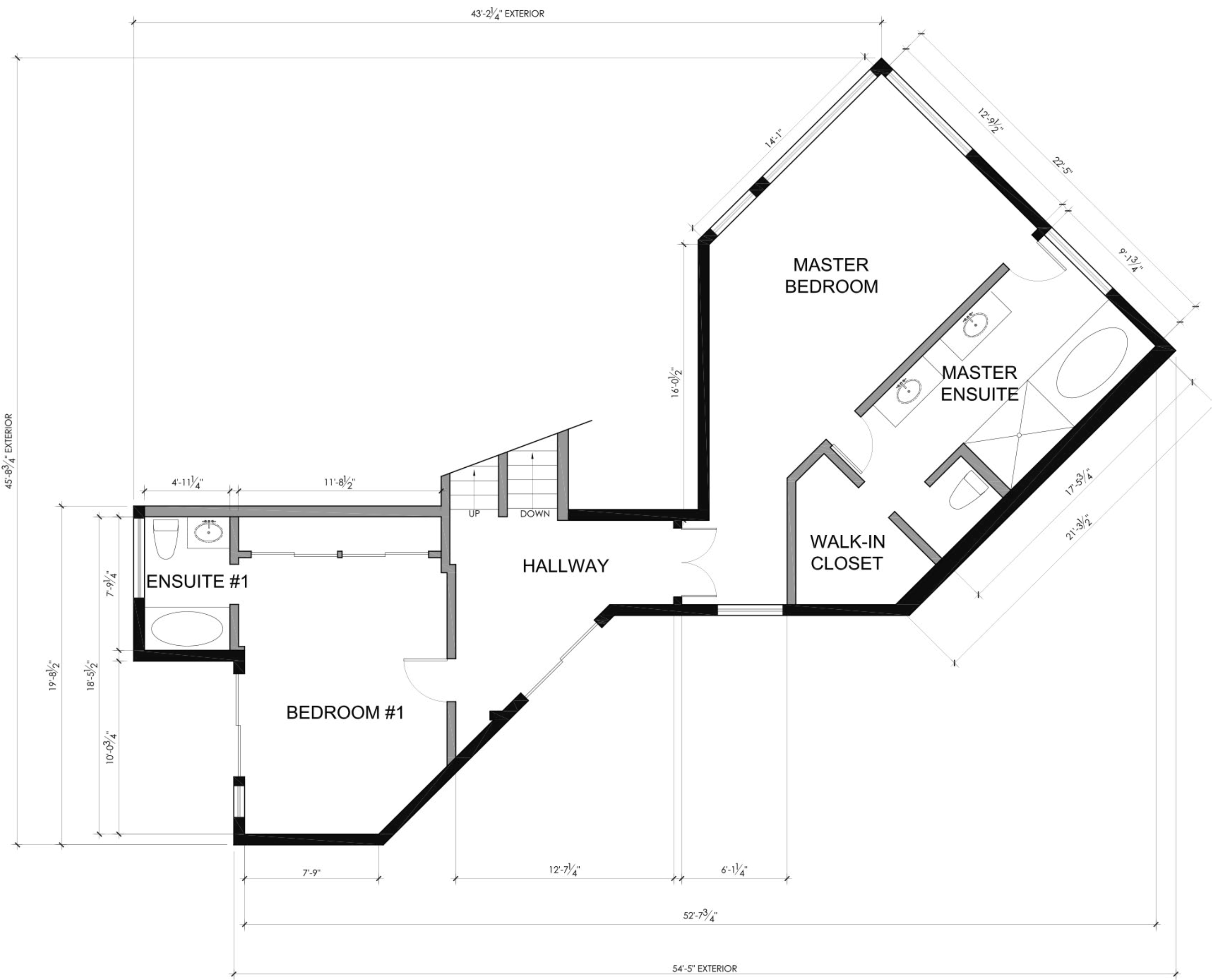




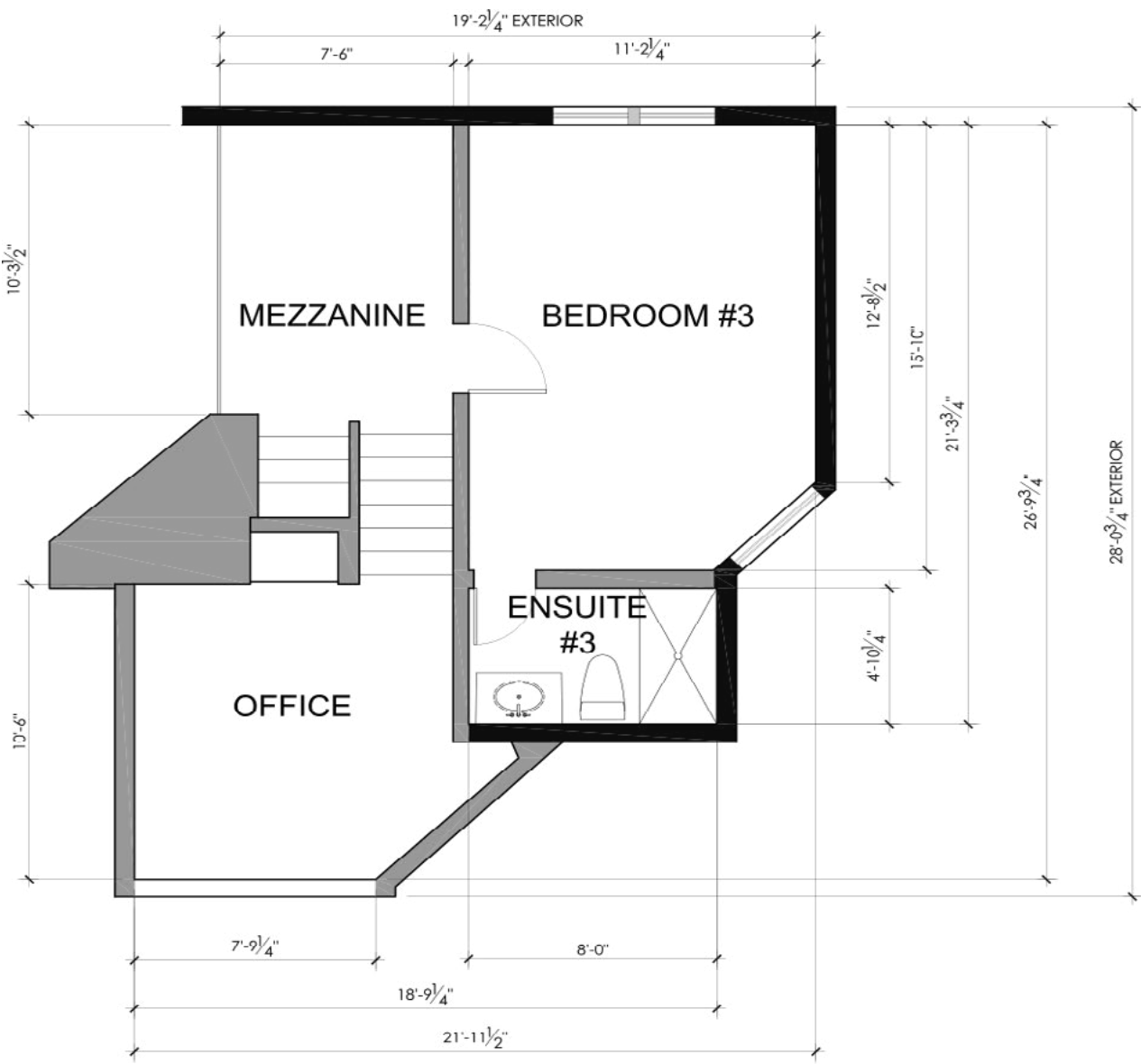
2 LOWER FLOOR - PROPOSED FLOOR PLAN
SCALE: 1" = 1'-0"



2 MAIN FLOOR - PROPOSED FLOOR PLAN
SCALE: 1" = 1'-0"



2 MIDDLE FLOOR - PROPOSED FLOOR PLAN (REMAIN AS IS)
- SCALE: 1" = 1'-0"



2 UPPER FLOOR - PROPOSED FLOOR PLAN (REMAIN AS IS)
- SCALE: 1" = 1'-0"



QK LIONS BAY BC BY DRONE

QK YOUTUBE CHANNEL 



LIONS BAY

Lions Bay is a small residential village municipality located north of Vancouver between Horseshoe Bay and Squamish on the Sea-to-Sky Highway on the steep eastern shores of Howe Sound.

Located on Highway 99 on the shores of British Columbia’s Howe Sound, Lions Bay is 30 minutes driving time south to downtown Vancouver or north to Squamish. The Lions Bay General Store and Cafe, a realty office, and a Post Office are located centrally, close to Highway 99.

[🔗 MORE ON WIKIPEDIA »](#)

- [🔗 QK WEBSITE »](#)
- [🔗 HIKING TRAILS PDF »](#)
- [🔗 QK YOUTUBE CHANNEL »](#)
- [🔗 LIONSBAY.CA »](#)
- [🔗 LIONS BAY GENERAL STORE AND CAFE »](#)
- [🔗 VANCOUVER ATTRACTIONS »](#)
- [🔗 GOOGLE MAPS – LIONS BAY »](#)



MORE INFO

